

KIT JOHNSON

residential



Weston, Bath

£280,000

Well Appointed, Solid, Three Bedroom End Terrace. EPC Grade D



12 The Weal

Bath

BA1 4EX

PRICE: £280,000

A solid, post war end terrace house which has been improved in recent years and is located in a peaceful setting above Weston Village yet within walking distance of excellent local facilities and Primary Schools. Arranged over two floors the accommodation includes hall, large living /dining room, fitted kitchen with a walk in pantry and small utility area, bathroom suite. Upstairs there are three good bedrooms. Outside and to the rear is an attractive long garden with a South Westerly aspect, established and with lawns, borders, shrubs and views towards Dean Hill. Recent improvements since 2016 include a new roof, insulation, gutters, fascias, external windows and doors. A popular location close to the countryside, highly recommended.

1950's End Terrace

Solid Stone Construction

Large Reception

Fitted Kitchen

Bathroom

Three Bedrooms

UPVC Double Glazing

Gas Central Heating

762 Sq Ft (70.8 Sq Mt)

Established Gardens & Views

Council Tax Band B £1349

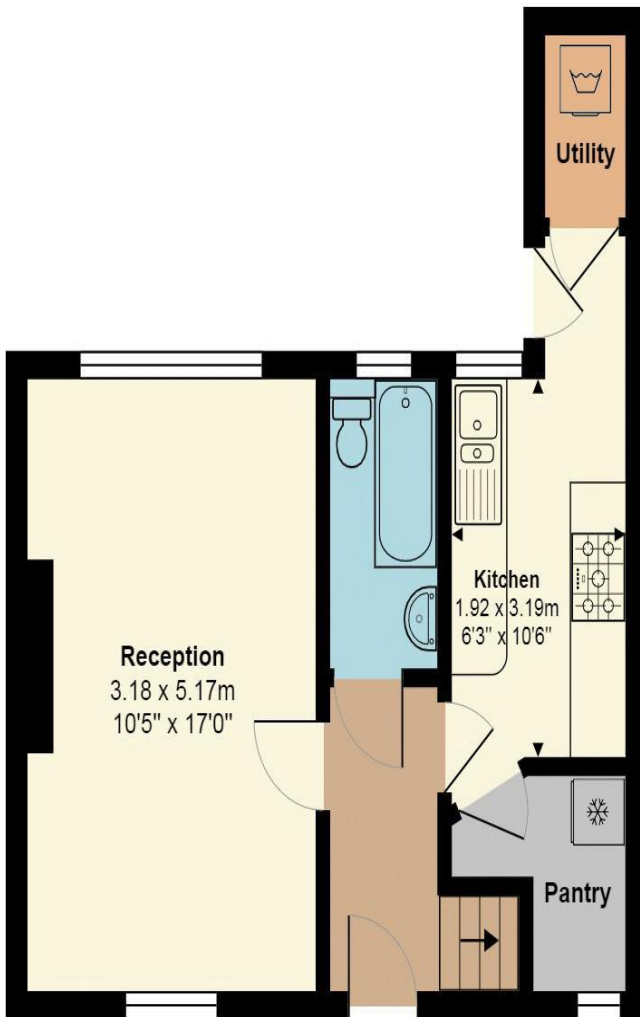
Semi Rural Yet Convenient

**Ideal Access to M4 Via
Lansdown**

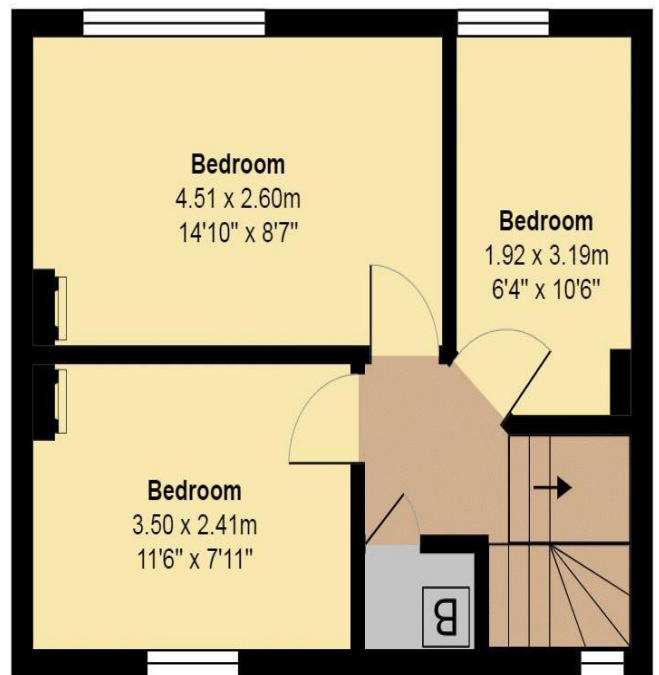
Freehold



12 The Weal



Ground Floor
Area: 36.7 m² ... 395 ft²



First Floor
Area: 34.1 m² ... 367 ft²

Total Area: 70.8 m² ... 762 ft²

All measurements of walls, doors, windows, fittings and appliances, their size and locations are approximate and cannot be regarded as being an accurate representation neither by the vendor nor their agent.
www.inovusproperty.co.uk

Kit Johnson Residential
26-33 High St
Weston
Bath
BA1 4BX
01225 444447
sales@kitjohnson.co.uk
www.kitjohnson.co.uk