

# KIT JOHNSON

residential



Weston Park West, Bath

£265,000

**Two Bedroom Upper Floor Apartment With Balcony and Garage. EPC Grade C**





19 Hockley Court  
Weston Park West  
Weston  
Bath  
BA1 4AR

**PRICE: £265,000**

A light and spacious upper floor apartment in a tranquil, leafy setting in the Weston Park area of Bath and a level walk to the City Centre and Royal Victoria Park. This apartment has great access to the M4 via Lansdown and Bath's Royal United Hospital.

Communal hall, private hallway, living room with access to a South facing balcony, fitted kitchen, two good sized bedrooms, the master has fitted wardrobes and a bathroom. Outside there are extensive communal gardens, parking, and a single garage in a block. Highly recommended.

**Upper Floor Apartment**

**1970's Purpose Built**

**Two Bedrooms**

**Living Room**

**Private South Facing Balcony**

**Fitted Kitchen**

**Bathroom Suite**

**Communal Gardens**

**Visitor Parking**

**Leasehold (Residue 999 Yrs)**

**Managing Agents- P.M**

**Property Services (01225  
874296)**

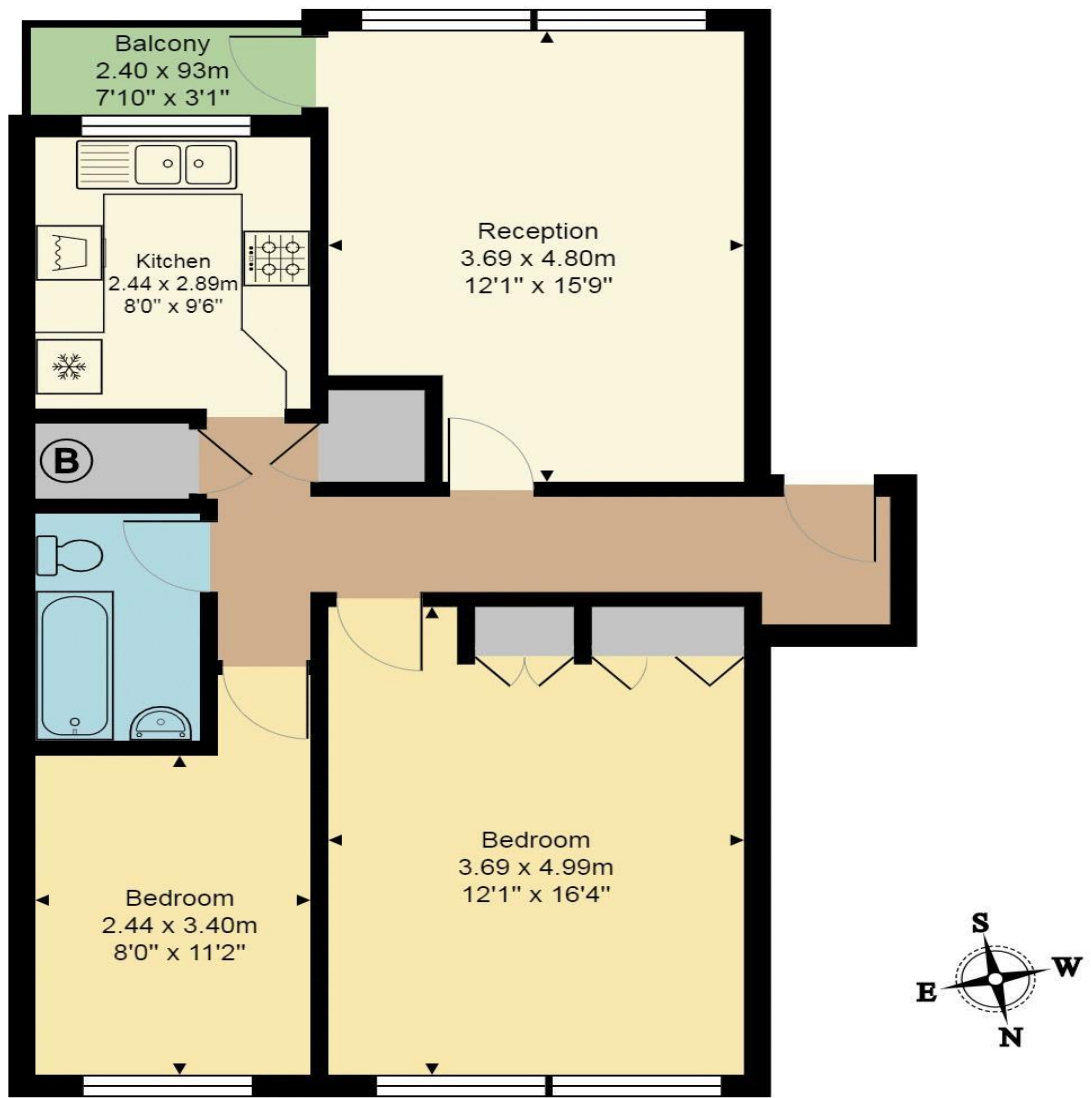
**Management Fees £1100 Per  
Annum**

**740 Sq Ft (68.8 Sq Mt)**

**Council Tax Band C £1603**



19 Hockley Court



First Floor

Total Area: 68.8 m<sup>2</sup> ... 740 ft<sup>2</sup> (excluding balcony)

All measurements of walls, doors, windows, fittings and appliances, their size and locations are approximate and cannot be regarded as being an accurate representation neither by the vendor nor their agent  
[www.inovusproperty.co.uk](http://www.inovusproperty.co.uk)

**Kit Johnson Residential**  
**26-33 High St**  
**Weston**  
**Bath**  
**BA1 4BX**  
**01225 444447**  
**[sales@kitjohnson.co.uk](mailto:sales@kitjohnson.co.uk)**  
**[www.kitjohnson.co.uk](http://www.kitjohnson.co.uk)**