

KIT JOHNSON

residential



Weston, Bath

£365,000

Stylish, Contemporary, Three Bedroom End Terrace. Gardens & Parking. EPC Grade C



38 Brookfield Park

Bath

BA1 4JQ

PRICE: £365,000

A beautifully appointed, solid Bath stone end terrace house in a popular location within Weston Village. Updated and refurbished in 2018/2019, this particular house has some distinct advantages to include private driveway parking for 2/3 cars, large South West facing level gardens and further scope to extend (subject to consents). The accommodation includes porch, hallway, living room with a Morso Defra approved wood burning stove (Eco design ready for 2022 environmental standards), kitchen/dining room with French doors onto the rear garden, utility and downstairs w.c. Upstairs there are three good size bedrooms and a bathroom suite. A beautiful family home.

1950's Semi

Three Double Bedrooms

Living Room

Contemporary Kitchen

Utility & W.C

Refurbished 2018/2019

**Gas Central Heating
(September 2018)**

1013 Sq Ft (94.1 Sq Mt)

Private Driveway & Parking

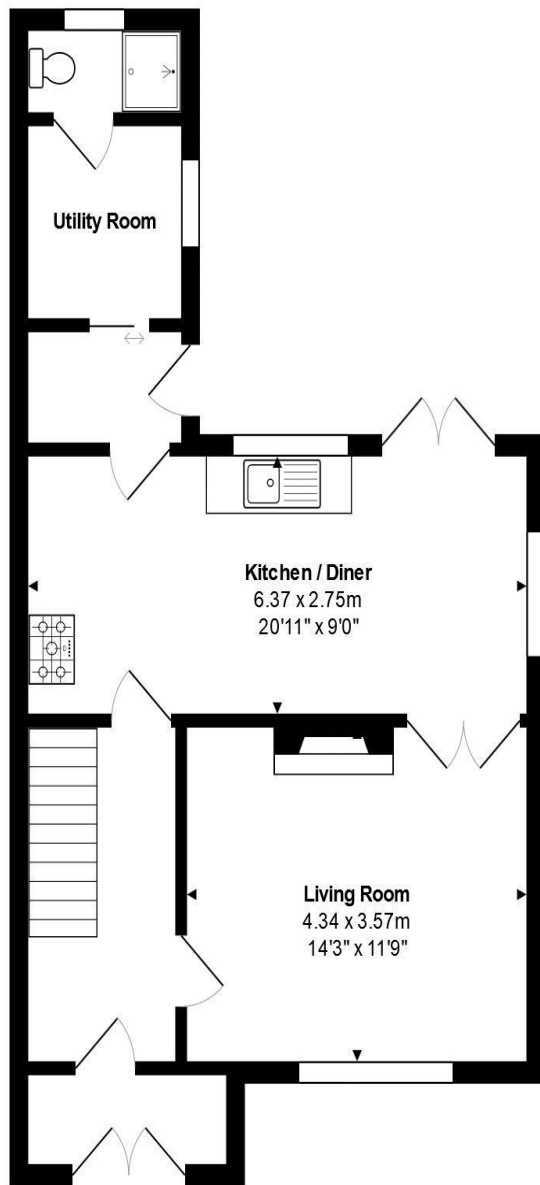
Freehold

**Scope to Extend (Subject to
Consents)**

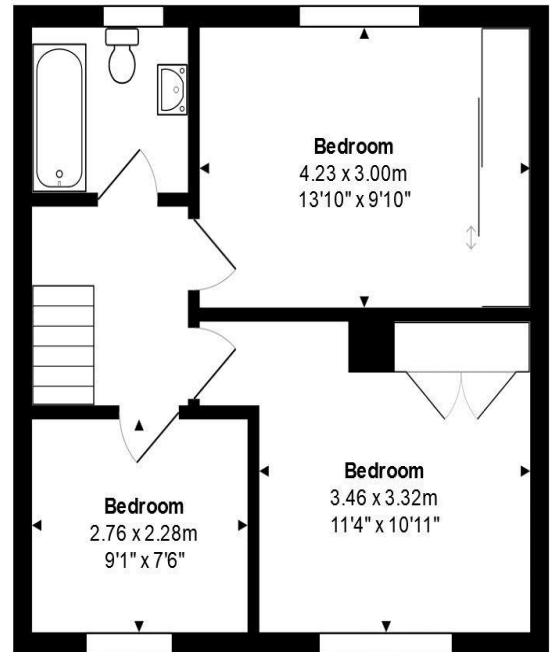
UPVC Double Glazing

Part Rural Views





Ground Floor



First Floor

Total Area: 94.1 m² ... 1013 ft²

All measurements are approximate and for display purposes only.

Kit Johnson Residential
26-33 High St
Weston
Bath
BA1 4BX
01225 444447
sales@kitjohnson.co.uk
www.kitjohnson.co.uk