

KIT JOHNSON

residential



Weston, Bath

£520,000

Large Four Bedroom Extended Family Home. EPC Grade D



8 Lynfield Park

Bath

BA1 4ER

PRICE: £520,000

Circa 1952, a light and spacious, extended, semi detached house in a popular Cul-de-Sac above Weston Village. Close to popular schools, the Royal United Hospital and the M4 via Lansdown.

The accommodation is arranged over two floors but there could be further scope to convert the large attic space (subject to consents).

Spacious hall, through living/dining room, kitchen/breakfast room with integrated appliances, cloakroom and direct access to the garage which is also plumbed as an additional utility room. Upstairs there are four bedrooms, en-suite shower room and family bathroom. Driveway parking at the front for two cars, a small enclosed South facing rear garden with views and rear gated access. Offered with vacant possession. Executor's Sale.

Solid 1950's Semi

Living/Dining Room

Four Bedrooms

Kitchen/Breakfast Room

Cloakroom

Garage & Parking

En Suite & Family Bathroom

UPVC Double Glazing

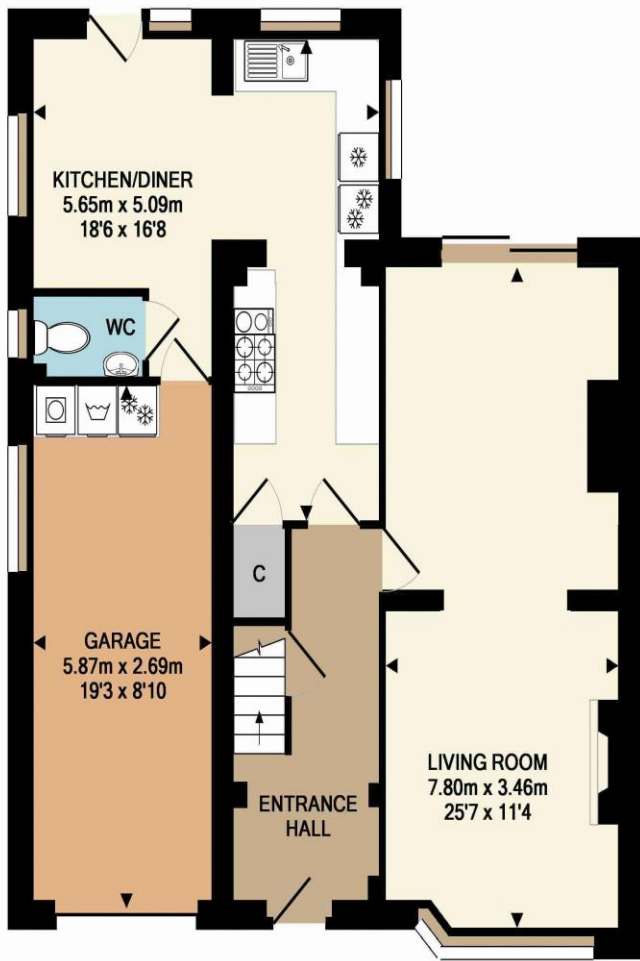
Gas Central Heating

1502 Sq Ft (139.6 Sq Mt)

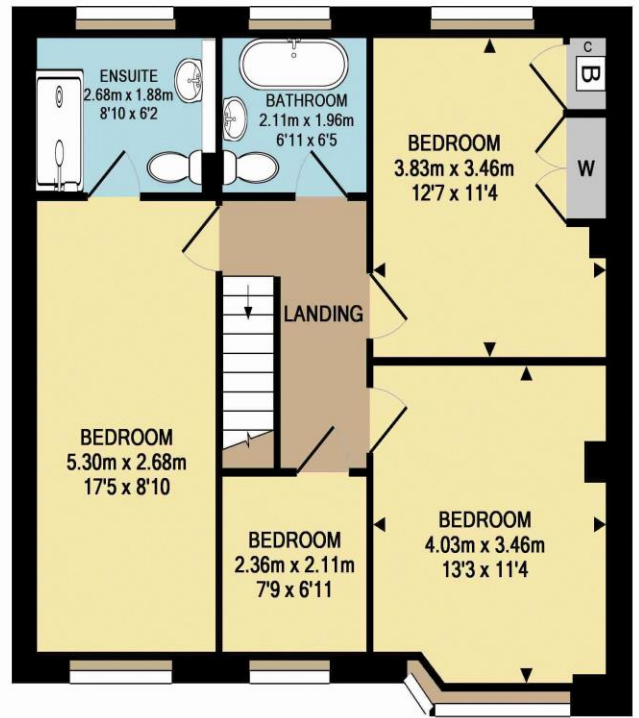
South Facing Garden

Freehold





GROUND FLOOR
APPROX. FLOOR
AREA 77.4 SQ.M.
(833 SQ.FT.)



1ST FLOOR
APPROX. FLOOR
AREA 62.2 SQ.M.
(669 SQ.FT.)

TOTAL APPROX. FLOOR AREA 139.6 SQ.M. (1502 SQ.FT.)

All measurements of walls, doors, windows, fittings and appliances, their size and locations are approximate and cannot be regarded as being an accurate representation neither by the vendor nor their agent. www.inovusproperty.co.uk

Kit Johnson Residential
26-33 High St
Weston
Bath
BA1 4BX
01225 444447
sales@kitjohnson.co.uk
www.kitjohnson.co.uk