

KIT JOHNSON

residential



Weston, Bath

£350,000

Contemporary, Stylish, 1950's Semi. EPC Grade C



19 Lansdown Lane

Bath

BA1 4LS

PRICE: £350,000

A stunning, contemporary 1950's semi detached house, updated and improved throughout and in a popular location at the bottom of Lansdown Lane, on the edge of Weston. The accommodation is arranged over two floors and includes good size hall, open plan living/dining room with a wood burning stove, modern fitted kitchen with integrated appliances. Upstairs there are three good bedrooms and bathroom suite. Gardens to the front, side and rear with a Pergola and seating area. The house was privately built by Harry. W. Cross in the 1950's and is conveniently located for Weston All Saints School, Bath's Royal United Hospital and the M4 via Lansdown. A beautiful, light and airy home.

Solid 1950's Semi

Beautifully Appointed

Three Bedrooms

Open Plan Living Room

Fitted Kitchen

Bathroom Suite

Established Gardens

UPVC Double Glazing

Gas Central Heating

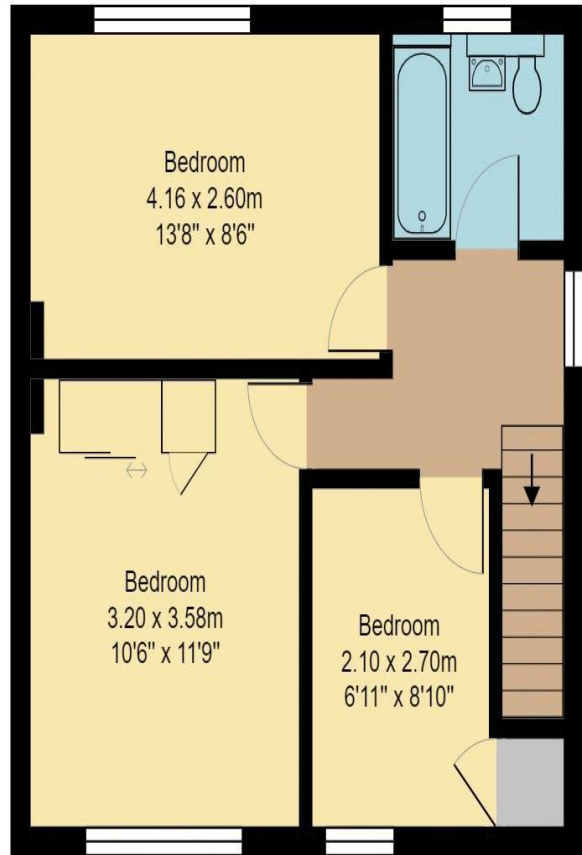
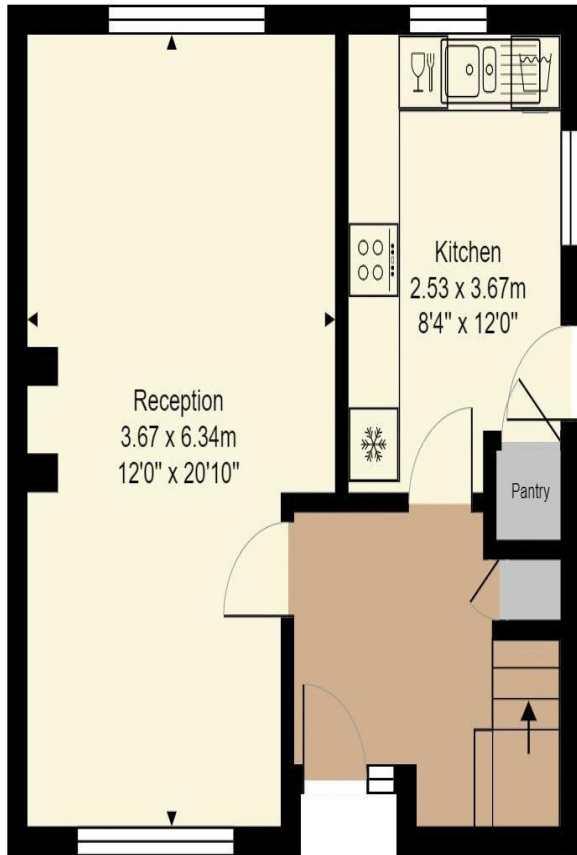
859 Sq Ft (79.8 Sq Mt)

Freehold

Council Tax Band D £1803



19 Lansdown Lane



Ground Floor
Area: 39.5 m² ... 425 ft²

First Floor
Area: 40.3 m² ... 434 ft²



Total Area: 79.8 m² ... 859 ft²

All measurements of walls, doors, windows, fittings and appliances, their size and locations are approximate and cannot be regarded as being an accurate representation neither by the vendor nor their agent.

www.inovusproperty.co.uk

Kit Johnson Residential
26-33 High St
Weston
Bath
BA1 4BX
01225 444447
sales@kitjohnson.co.uk
www.kitjohnson.co.uk