

KIT JOHNSON

residential



St. Stephens Court,
Lansdown

£310,000

Two Bedroom Ground Floor Apartment. Garage & Garden. EPC Grade D



7 St. Stephens Court

Bath

BA1 5PG

PRICE: £310,000

A two double bedroom ground floor apartment in this popular Lansdown development, off St Stephen's Road with easy access to the City Centre. It is very rare that ground floor apartments come to the market in this privately built development. Light and airy accommodation includes private entrance, hall, living room with glazed door onto the personal lawn and patio, two bedrooms, bathroom and fitted kitchen. Visitor parking and single garage. Offered with vacant possession and close to the Royal Crescent and The Circus this is sure to impress.

Purpose Built Apartment (1968)

Ground Floor

Two Double Bedrooms

Peaceful Location

Bathroom Suite

Fitted Kitchen

Private Lawn & Patio

Garage & Visitor Parking

Residue 999 Yr Lease (Share of Freehold)

UPVC Double Glazing

Electric Night Storage Heating

Privately Managed (St Stephen's Court (Bath) Ltd)

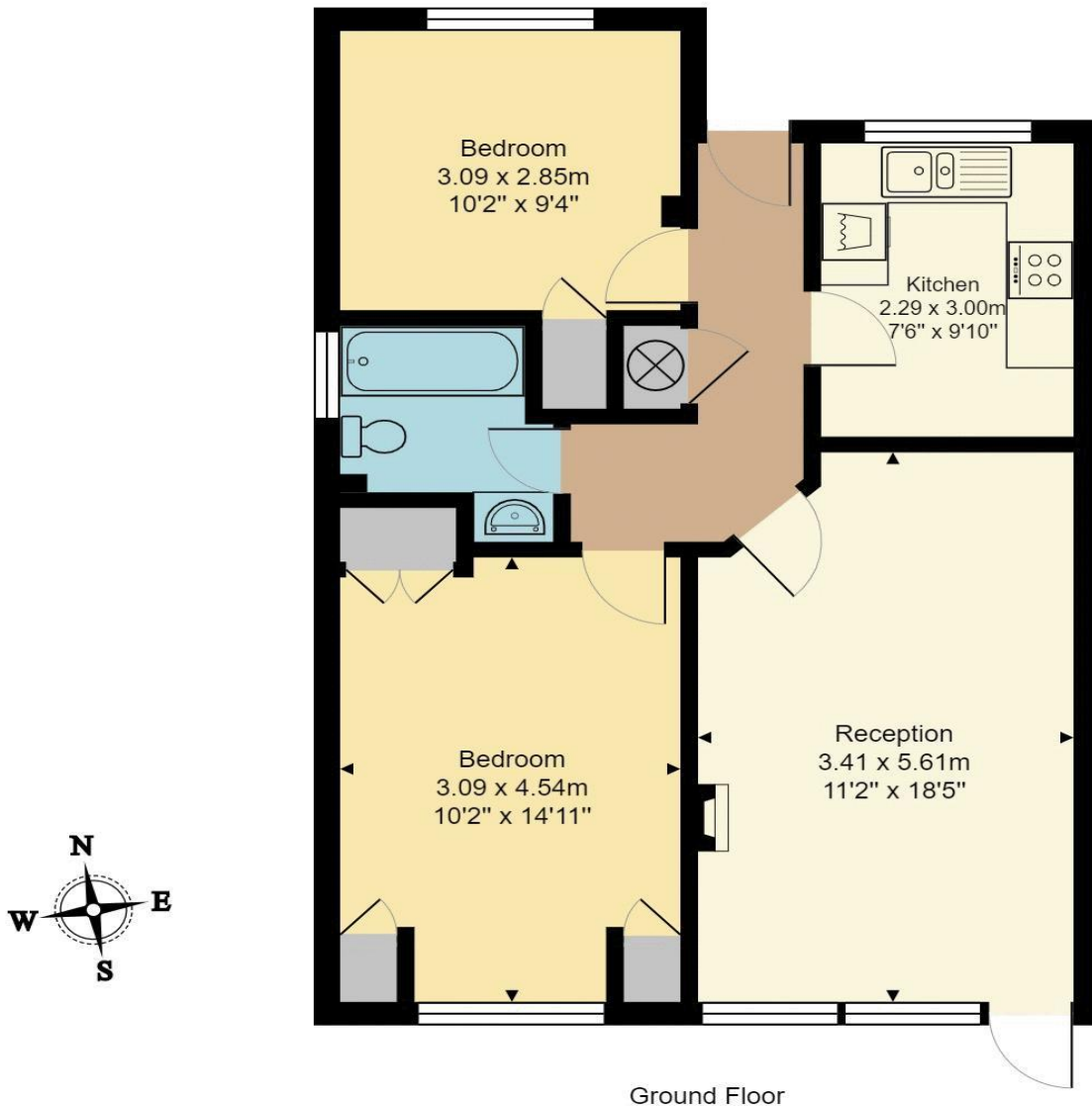
Council Tax Band C £1603

667 Sq Ft (62 Sq Mt)

Prime Residential Location



7 St Stephen's Court



Total Area: 62.0 m² ... 667 ft²

All measurements of walls, doors, windows, fittings and appliances, their size and locations are approximate and cannot be regarded as being an accurate representation neither by the vendor nor their agent.
www.inovusproperty.co.uk

Kit Johnson Residential
26-33 High St
Weston
Bath
BA1 4BX
01225 444447
sales@kitjohnson.co.uk
www.kitjohnson.co.uk