

KIT JOHNSON

residential



Weston Park, Bath

£395,000

Three Bedroom, Three Storey Townhouse. EPC Grade D



4 Mountain Ash

Bath

BA1 2UU

PRICE: £395,000

Just below Lansdown and with stunning Westerly views to the front, a late 1960's three storey house built by Messrs Beazers & Sons. Access to Bath can be on foot via the Approach Golf Course, bus via Sion Hill or by car via Weston Park. It is rare that these particular properties come to market. Hall, cloakroom, small utility at entrance level. Sitting room, dining room and kitchen on the first floor with access to the rear garden. On the second floor, three bedrooms and a bathroom. Attractive tiered garden to the rear with access. There is a garage in a block with parking in front. A solid home in need of some updating, hence the price. Sought after, peaceful location.

Circa 1968

Stunning Views

Three Bedrooms

Two Reception Rooms

Bathroom & Cloakroom

UPVC Double Glazing

Gas Central Heating

Garage & Parking

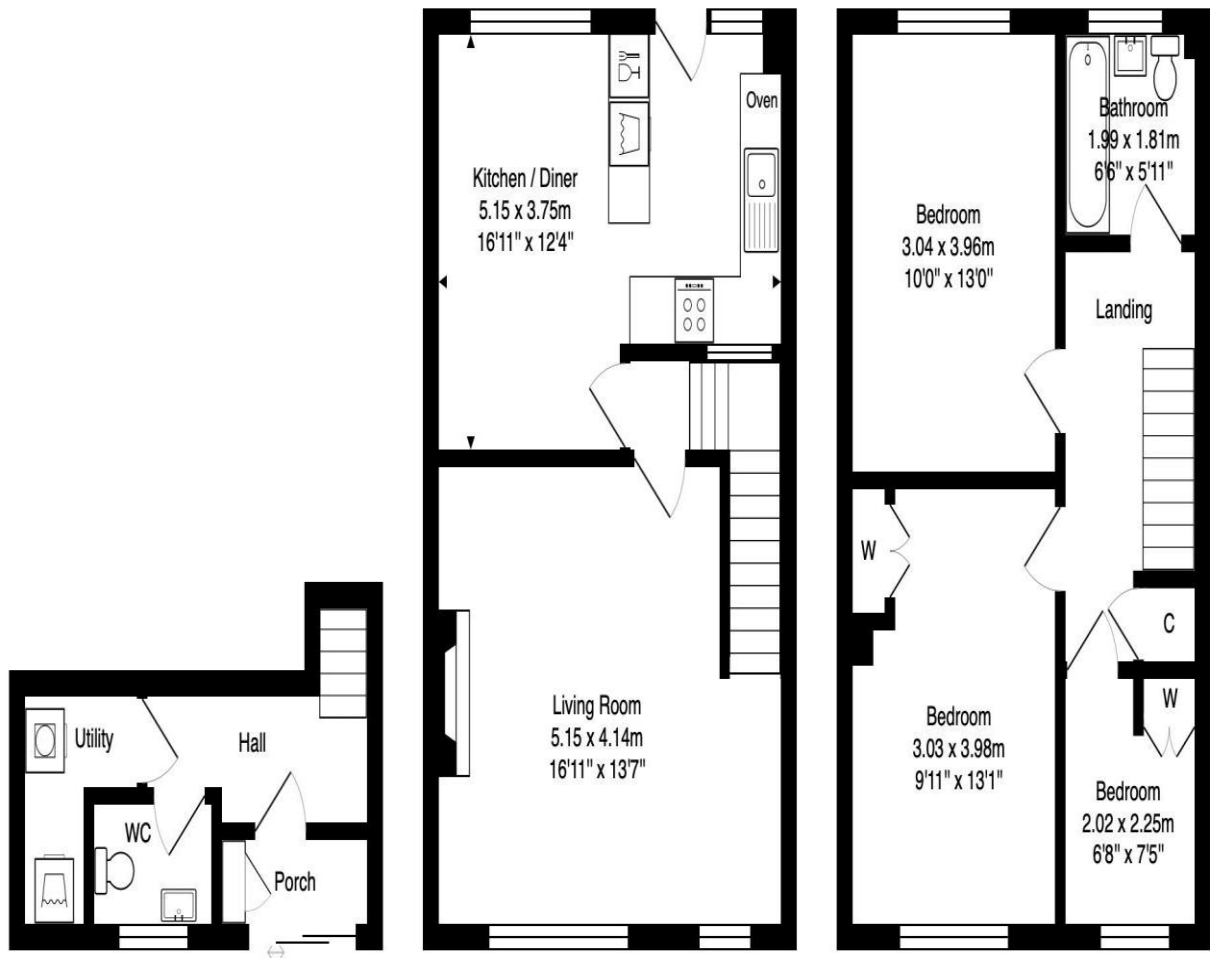
1012 Sq Ft (94 Sq Mt)

Council Tax Band D £1981

Front & Rear Gardens

Leasehold (Residue 999 Yrs)





Ground Floor
Area: 11.1 m² ... 120 ft²

First Floor
Area: 41.4 m² ... 446 ft²

Second Floor
Area: 41.4 m² ... 446 ft²

Total Area: 94.0 m² ... 1012 ft²

Whilst every attempt has been made to ensure the accuracy of the floorplan contained here, measurements of doors, windows, rooms and any other items are approximate and no responsibility is taken for any error, omission or mis-statement.

This plan is purely for illustrative purposes only and should be used as such by any prospective purchaser.

Area includes internal and external wall thickness

www.energyassessmentservices.co.uk

Kit Johnson Residential
26-33 High St
Weston
Bath
BA1 4BX
01225 444447
sales@kitjohnson.co.uk
www.kitjohnson.co.uk