

KIT JOHNSON

residential



Peasdown St. John

£325,000

Link Detached Three Bedroom House. EPC Grade D



**75 Under Knoll
Peasedown St. John
Bath
BA2 8TY**

PRICE: £325,000

A beautifully presented link detached house built by Westbury Homes in 2000. The garage was converted some years ago but the rest of the house has been updated and improved to a high specification in recent years. Accommodation includes hall, cloakroom, large reception room, fitted kitchen with integrated appliances, dining room. Upstairs there are three bedrooms, en-suite and family bathroom. Parking at the front. Delightful gardens to the rear with patio, borders and a small pond. Under Knoll is one of the most popular roads in this popular village South of Bath. Peasedown St John has a good range of small shops, pubs,

local supermarkets and a primary school. There is excellent access to Bath by car or bus. A wonderful family home.

Circa 2000

Popular Cul-de-Sac

Three Bedrooms

Two Reception Rooms

Cloakroom, Bathroom & En-Suite

Fitted Kitchen

UPVC Double Glazing

Gas Central Heating

999 Sq Ft (92.8 Sq Mt)

Parking

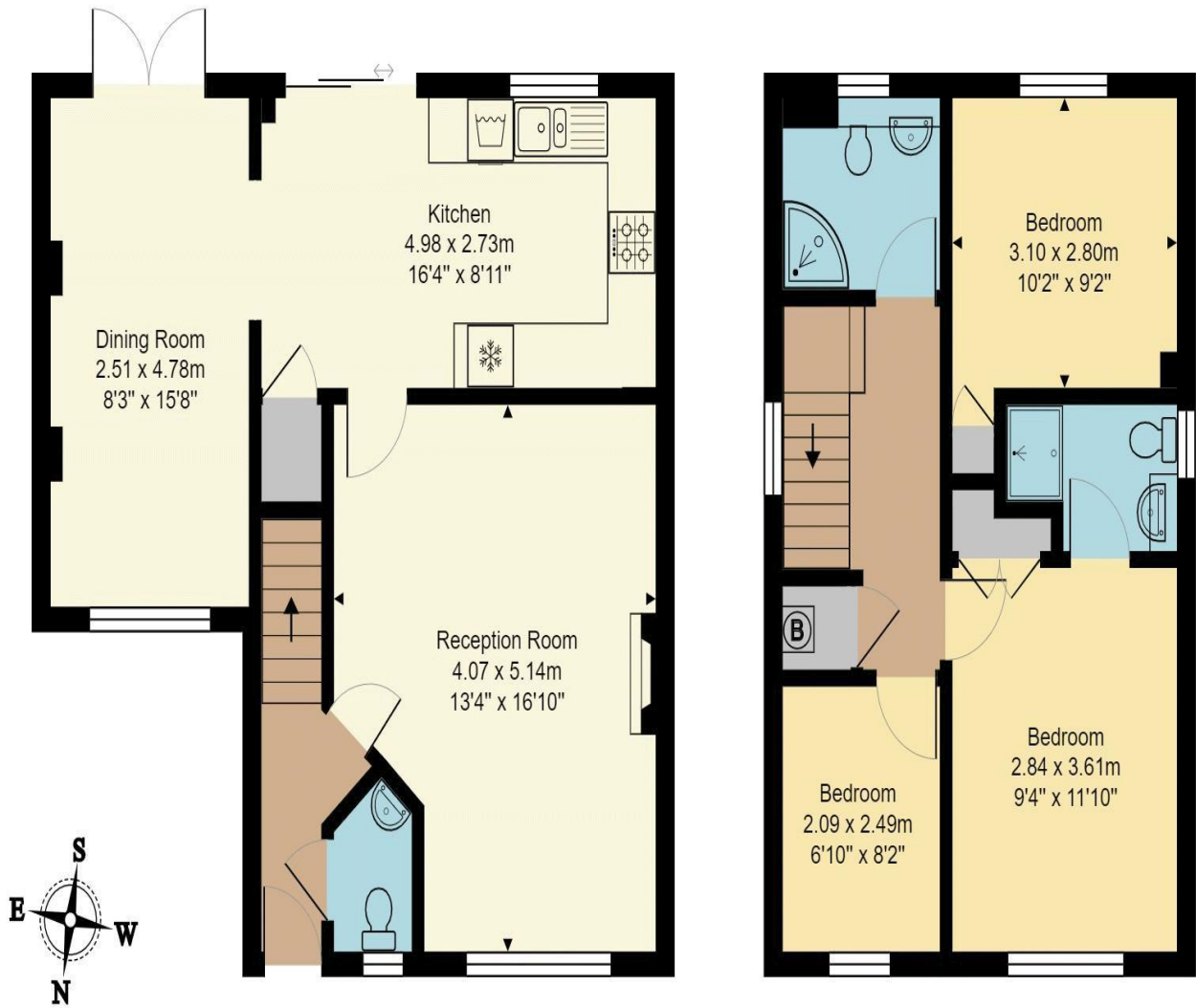
Attractive Sunny Garden

Freehold

Council Tax Band D £1981



75 Under Knoll



Ground Floor
Area: 52.8 m² ... 568 ft²

First Floor
Area: 40.0 m² ... 431 ft²

Total Area: 92.8 m² ... 999 ft²

All measurements of walls, doors, windows, fittings and appliances, their size and locations are approximate and cannot be regarded as being an accurate representation neither by the vendor nor their agent.
www.inovusproperty.co.uk

Kit Johnson Residential
26-33 High St
Weston
Bath
BA1 4BX
01225 444447
sales@kitjohnson.co.uk
www.kitjohnson.co.uk