

KIT JOHNSON

residential



Broadmoor Lane, Bath

£395,000

Spacious 1950's Semi. Large Gardens. Three Bedrooms. EPC Grade E



62 Broadmoor Lane
Bath
BA1 4LA

PRICE: £395,000

Circa 1952 and built by Arthur Mortimer as individual double bay semi detached houses and on the open market for the first time since the late 1950's . In need of updating there is scope to extend or alter the house which stands on an extremely generous plot. The accommodation is arranged over two floors and includes hall, cloakroom, living room and dining room (both with original Parquet flooring) kitchen, utility and workshop. Upstairs there are three bedrooms and bathroom suite. A large loft offers scope to convert (subject to consents). Outside the driveway leads to a single garage with electric doors. Extensive gardens to the rear with established borders and an old vegetable patch. Garden store. Lovely rural views to the distance. Broadmoor Lane is

conveniently situated for Weston All Saints School, all the amenities in Weston Village and the M4 via Lansdown. Vacant Possession.

1950's Semi

Three Bedrooms

Two Receptions

Kitchen

Utility & Workshop

Cloakroom

Large Gardens

Garage

UPVC Double Glazing

Gas Central Heating

Updating Required

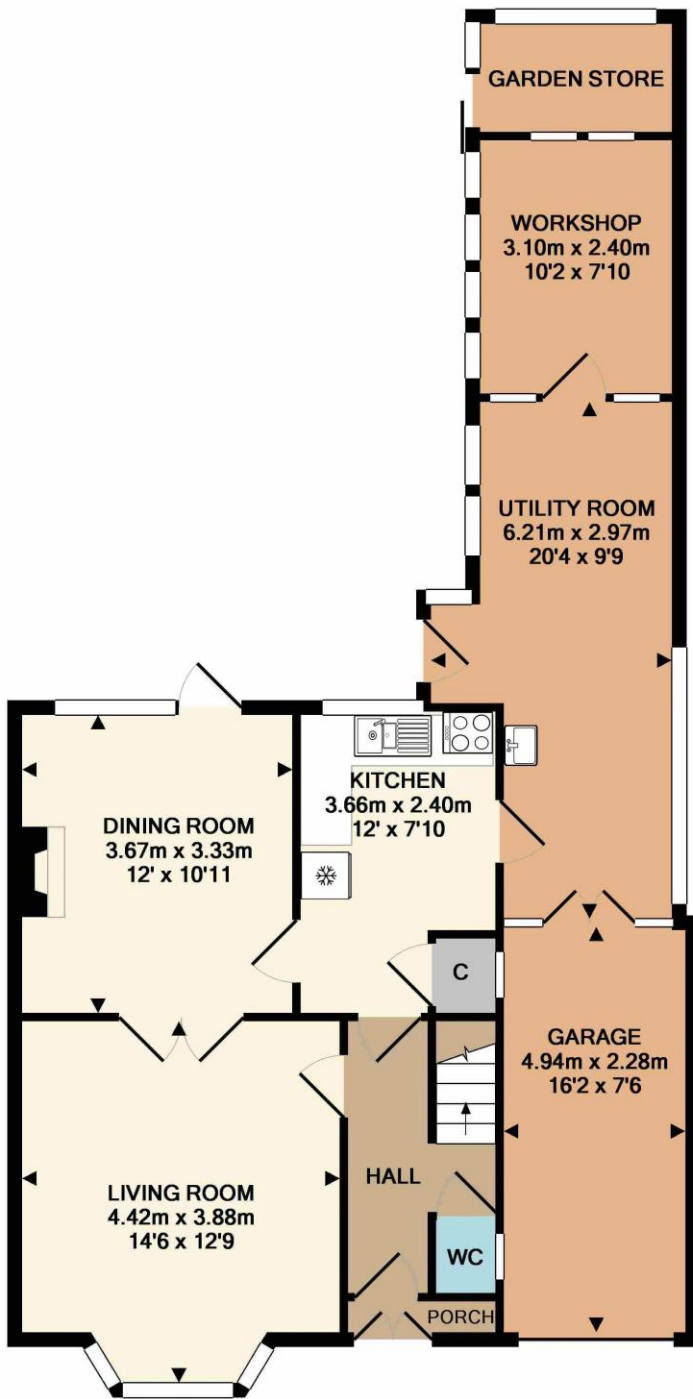
Popular Location

Freehold

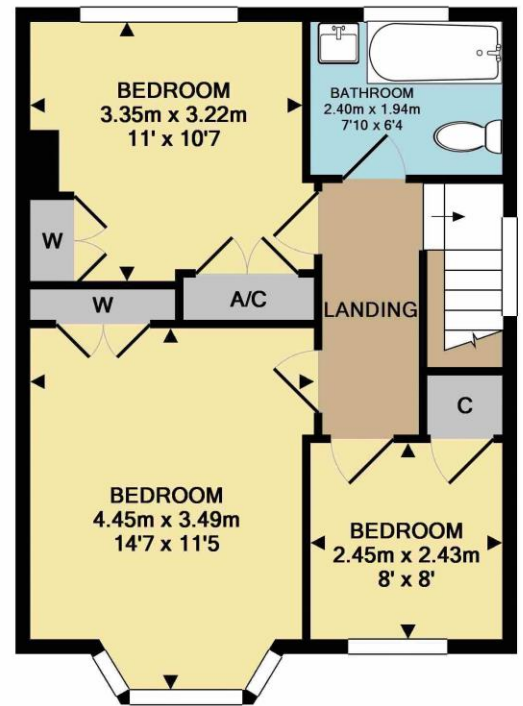
Council Tax Band D £1573

1348 Sq Ft (125.3 Sq Mt)





GROUND FLOOR
APPROX. FLOOR
AREA 81.4 SQ.M.
(876 SQ.FT.)



1ST FLOOR
APPROX. FLOOR
AREA 43.8 SQ.M.
(472 SQ.FT.)

TOTAL APPROX. FLOOR AREA 125.3 SQ.M. (1348 SQ.FT.)

All measurements of walls, doors, windows, fittings and appliances, their size and locations are approximate and cannot be regarded as being an accurate representation neither by the vendor nor their agent. www.inovusproperty.co.uk

Kit Johnson Residential
26-33 High St
Weston
Bath
BA1 4BX
01225 444447
sales@kitjohnson.co.uk
www.kitjohnson.co.uk