

# KIT JOHNSON

residential



Weston, Bath

£275,000

**Well Appointed Three Bedroom End Terrace House**



# 101 Southlands

Bath

BA1 4DZ

**PRICE: £275,000**

Located above the village and a few hundred yards of the recreation ground, a beautifully appointed three double bedroom end terrace house, ideal for a young family being convenient for both Primary Schools and the Royal United Hospital. Enhanced and improved this light and spacious home has accommodation to include hall, living room, kitchen/breakfast room, outside store/utility and modern downstairs bathroom suite. Upstairs there are three good bedrooms with views up towards Beckford Tower at the front. The garden at the back has a safety aspect with patio, small lawn and hard standing secure parking for a large vehicle. A convenient and contemporary home. Highly Recommended.

**End Terrace House**

**Three Double Bedrooms**

**Kitchen/Breakfast Room**

**Integrated Kitchen Appliances**

**Large Living Room**

**Downstairs Bathroom**

**Store/ Utility Room**

**Gas Central Heating**

**Garden & Parking**

**Close to Shops**

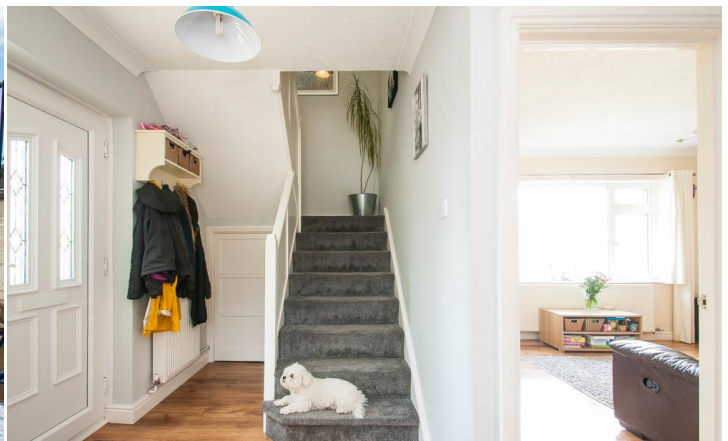
**UPVC Double Glazing**

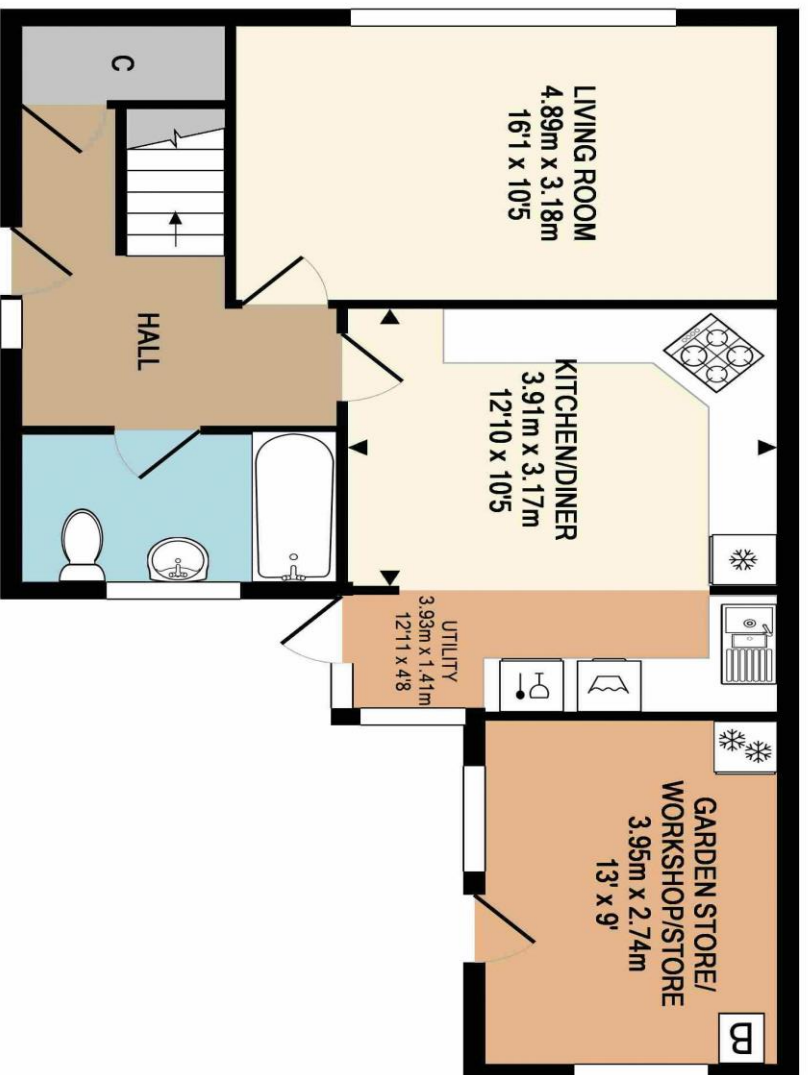
**Freehold**

**Council Tax Band A £1049**

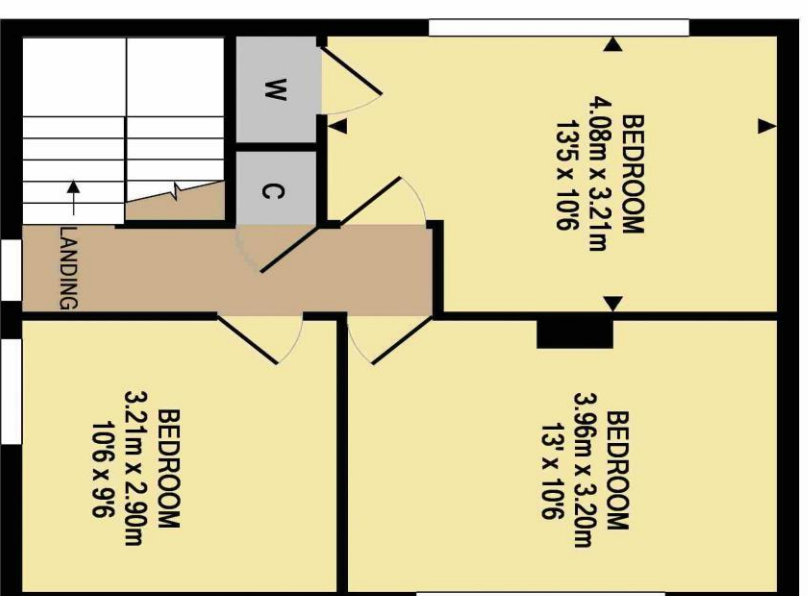
**1107 Sq Ft (102.9 Sq Mt)**

**Kit Johnson Residential**  
**26-33 High St**  
**Weston**  
**Bath**  
**BA1 4BX**  
**01225 44447**  
**sales@kitjohnson.co.uk**





GROUND FLOOR  
APPROX. FLOOR  
AREA 59.7 SQ.M.  
(643 SQ.FT.)



1ST FLOOR  
APPROX. FLOOR  
AREA 43.1 SQ.M.  
(464 SQ.FT.)

TOTAL APPROX. FLOOR AREA 102.9 SQ.M. (1107 SQ.FT.)

All measurements of walls, doors, windows, fittings and appliances, their size and locations are approximate and cannot be regarded as being an accurate representation neither by the vendor nor their agent. [www.inovusproperty.co.uk](http://www.inovusproperty.co.uk)