

KIT JOHNSON

residential



Cavendish Crescent, Bath

£495,000

Exceptional Ground Floor Apartment. Prestigious Location.



Flat 1
1 Cavendish Crescent
Bath
BA1 2UG

PRICE: £495,000

A rare opportunity and in need of general updating. A well proportioned ground floor apartment with high ceilings and an abundance of period detail. The crescent sits on the Northern slopes of Bath, designed by John Pinch and built between 1817 and 1830. No 1 has it's own private gated entrance. Communal door, communal hall, private hallway at ground floor level, sitting room with full height Sash windows enjoying a Southerly aspect, kitchen/dining room, cloakroom, double bedroom and en-suite bathroom. Attractive private courtyard garden to the rear of the building. The crescent also has a residents communal garden at the front. This is a sought after residential location at the upper end of Cavendish Place and close to the

Royal Crescent and St James Square. Vendor suited.

Ground Floor Apartment

Listed Grade II (1820's)

Period Detail Throughout

Updating Required

Two Principle Receptions

Cloakroom

Double Bedroom & En-Suite

Private Courtyard Garden

Gas Central Heating

916 Sq Ft (85.1 Sq Mt)

Council Tax Band C £1681

Highly Sought After Location

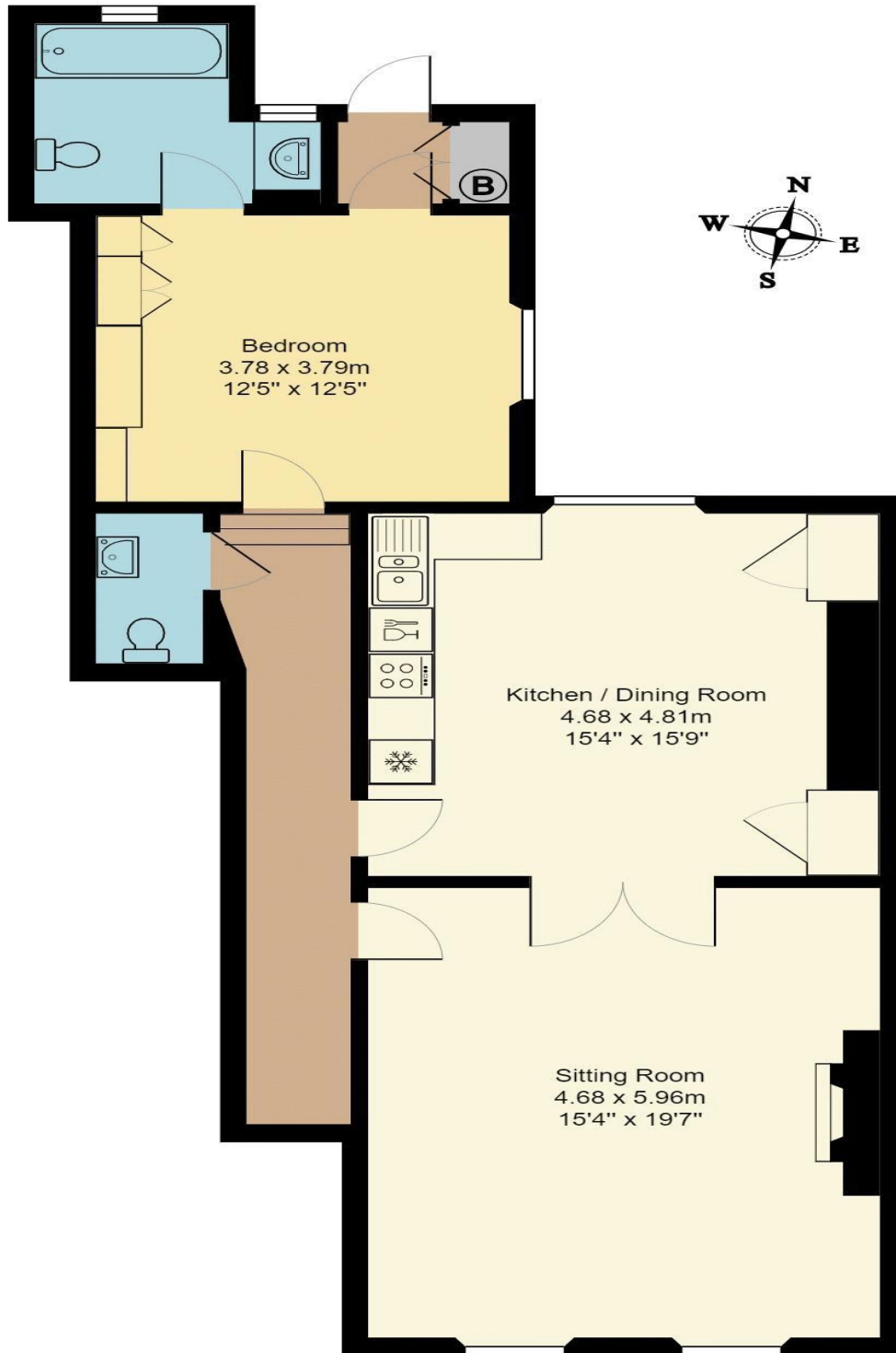
Leasehold (Residue 999 Years)

**Management Fees Circa £1300
Per Annum**

**Managed By PM Property
Management (01225 874296)**



Flat 1, 1 Cavendish Crescent



Ground Floor

Total Area: 85.1 m² ... 916 ft²

All measurements of walls, doors, windows, fittings and appliances, their size and locations are approximate and cannot be regarded as being an accurate representation neither by the vendor nor their agent.
www.inovusproperty.co.uk

Kit Johnson Residential, 26-33 High Street, Bath, BA1 4BX. T: 01225 444447. E: sales@kitjohnson.co.uk