

KIT JOHNSON

residential



Weston, Bath

£295,000

Three Bedroom End of Terrace. Popular Location. EPC Grade D



53 Greenbank Gardens
Bath
BA1 4EF

PRICE: £295,000

On the market for the first time since being built, and in need of updating, a three bedroom end of terrace home in a popular Cul-de-Sac off Penn Hill and overlooking Weston Village, with it's excellent local amenities, schools and community. Accommodation includes porch, living room, dining room and fitted kitchen both with lovely views over Weston and the hills of Lansdown toward Beckford Tower. On the first floor are three good bedrooms and bathroom. To the rear is a lawned garden, large undercroft/cellar ideal for storage, and side access. At the front of the house is a gravelled driveway for one car. Offered with vacant possession and no onward chain, this property has lots of potential to become a wonderful home in a popular location.

End of Terrace

Three Bedrooms

Two Reception Rooms

Cellar Storage

No Onward Chain

Off-Street Parking

Quiet Cul-de-Sac Location

920 Sq Ft (85.5 Sq Mt)

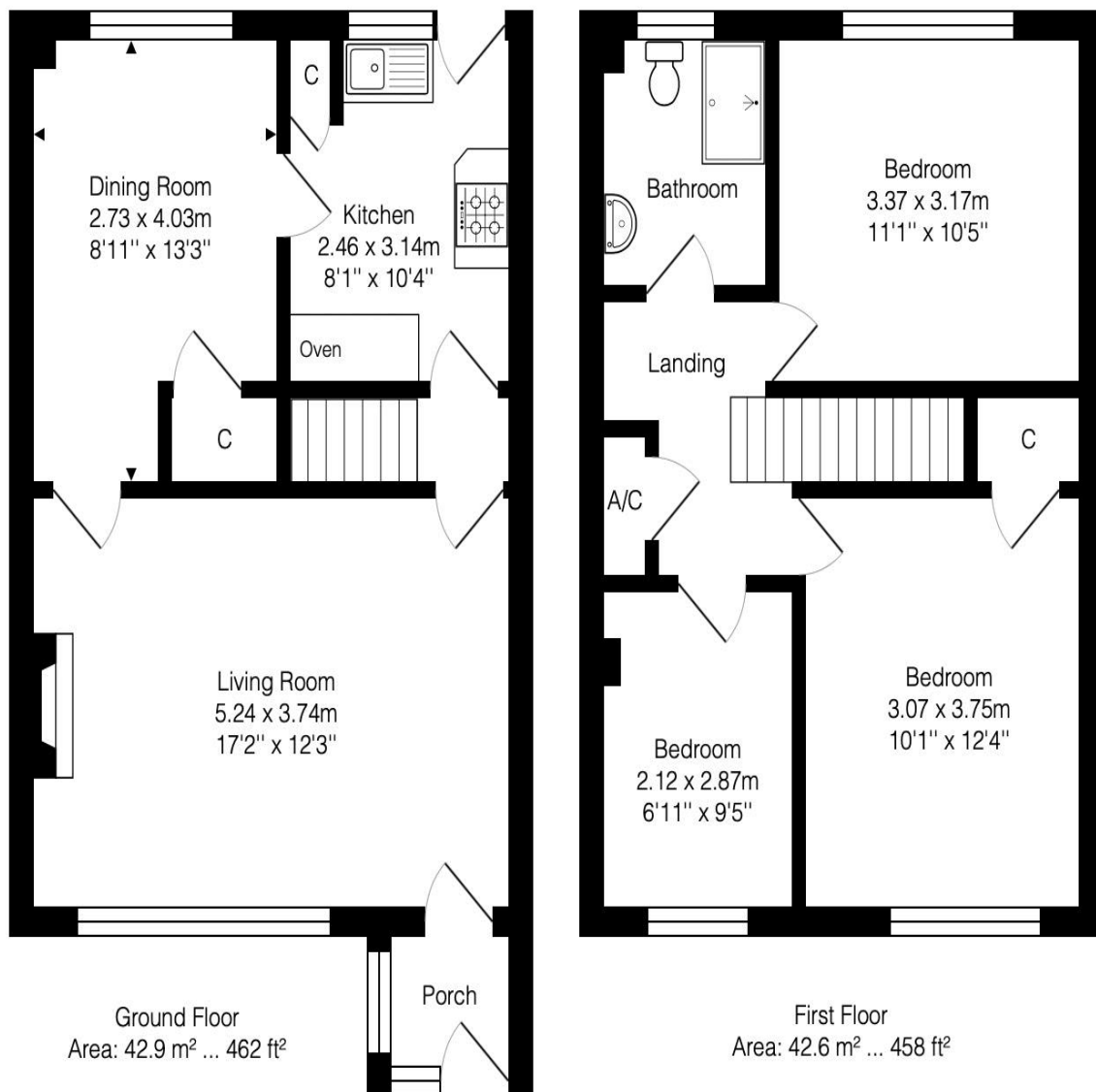
Freehold

Council Tax Band C £1681

In Need of Updating

Vacant Possession





Whilst every attempt has been made to ensure the accuracy of the floorplan contained here, measurements of doors, windows, rooms and any other items are approximate and no responsibility is taken for any error, omission or mis-statement.

This plan is purely for illustrative purposes only and should be used as such by any prospective purchaser.

Area includes internal and external wall thickness

www.energyassessmentservices.co.uk

Kit Johnson Residential
26-33 High St
Weston
Bath
BA1 4BX
01225 444447
sales@kitjohnson.co.uk
www.kitjohnson.co.uk