

KIT JOHNSON

residential



Weston, Bath

£150,000

One Bedroom Garden Apartment. Private Entrance. EPC Grade C



14 Sheppards Gardens
High Street
Weston
Bath
BA1 4DF

PRICE: £150,000

Always popular, a beautifully appointed ground floor garden apartment with its own private entrance and a South facing aspect. Sheppards Gardens is a popular retirement development off Weston High Street, ideal for all the local amenities in the village to include Chemist, small Supermarket and Post Office. There is lift access within the main building, communal facilities and unallocated parking. The accommodation includes porch, living room, fitted kitchen with integrated appliances, utility cupboard with plumbing for a washing machine, double bedroom and a bespoke shower room. A light and airy apartment that is ready to move into. Vacant possession.

**Retirement Development
(Over 55's)**

Garden Apartment

Private Entrance

Lift Access

Communal Facilities

**Attractive Communal
Gardens**

South Facing Aspect at Front

409.96 Sq Ft (38.09 Sq Mt)

Electric Heating

UPVC Double Glazing

Estate Manager (01225 336140)

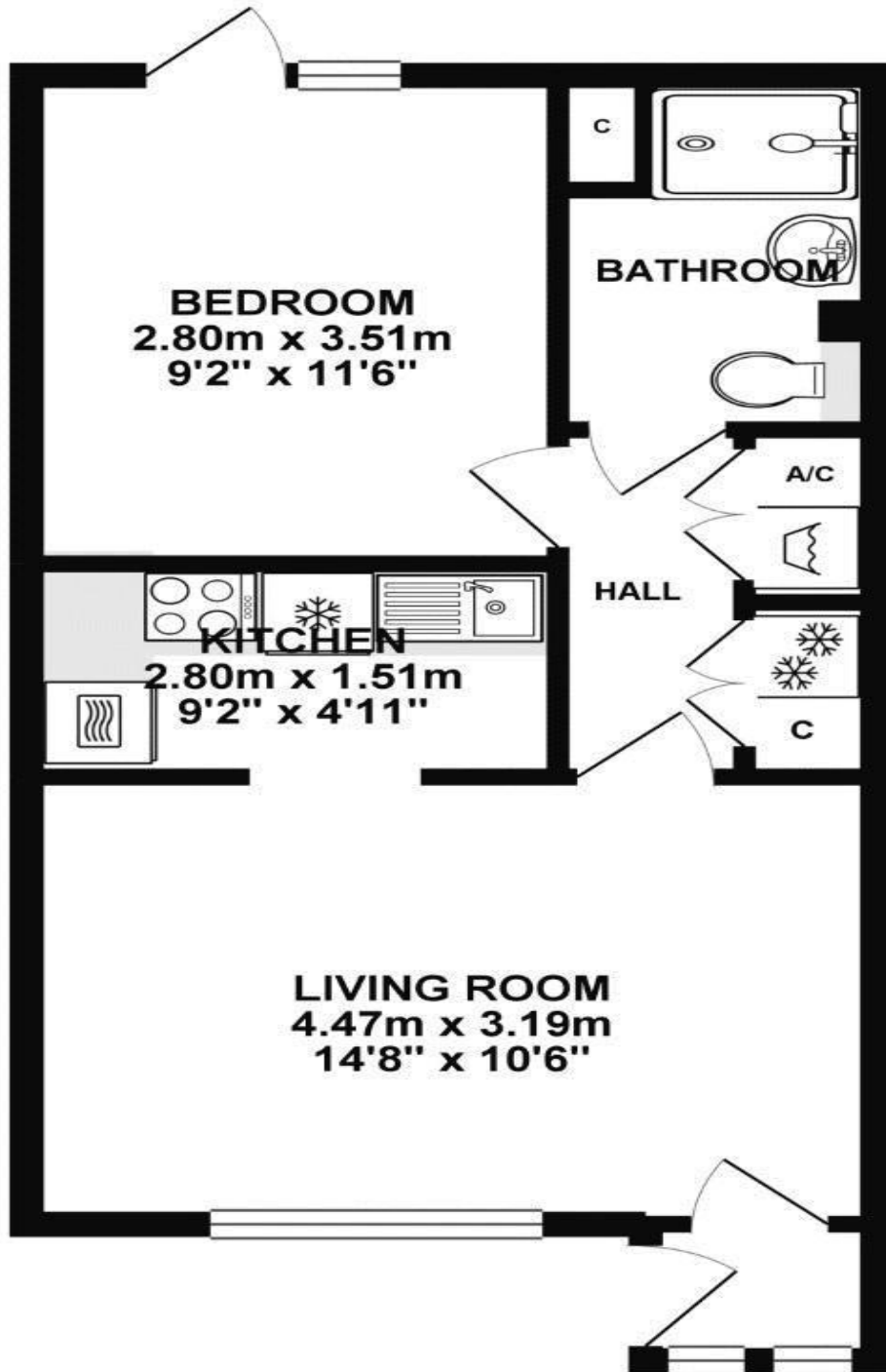
Council Tax Band B £1471

New 99 Year Lease on Sale

**£197.74pcm Management
Fees**



**GROUND FLOOR 38.09 sq. m.
(409.96 sq. ft.)**



TOTAL FLOOR AREA : 38.09 sq. m. (409.96 sq. ft.) approx.

Whilst every attempt has been made to ensure the accuracy of the floorplan contained here, measurements of doors, windows, rooms and any other items are approximate and no responsibility is taken for any error, omission or mis-statement. This plan is for illustrative purposes only and should be used as such by any prospective purchaser. The services, systems and appliances shown have not been tested and no guarantee as to their operability or efficiency can be given.
Made with Metropix ©2019

Kit Johnson Residential
26-33 High St
Weston
Bath
BA1 4BX
01225 444447
sales@kitjohnson.co.uk
www.kitjohnson.co.uk