



Weston, Bath

£160,000

Bungalow Style, Ground / Garden Level Apartment. Private Entrance.



22 Sheppards Gardens
High Street
Weston
Bath
BA1 4DF

PRICE: £160,000

One of only two "bungalow" style apartments in this popular retirement development right in the heart of Weston with all its excellent local facilities. Access via a lift to the garden level or steps at the side into the communal gardens. Private access into the Porch, Living Room, fitted Kitchen with a window, double Bedroom with French door to the rear, Bathroom suite. There are excellent communal facilities including the award winning Gardens, Laundry room, large Lounge and general parking. This is a particularly special location in the development. Highly recommended.

End Terrace "Bungalow" Style

One Bedroom

Local Amenities in the Village

Excellent Communal Facilities

**Estate Manager (Janice)
01225 336140**

Electric Night Storage Heating

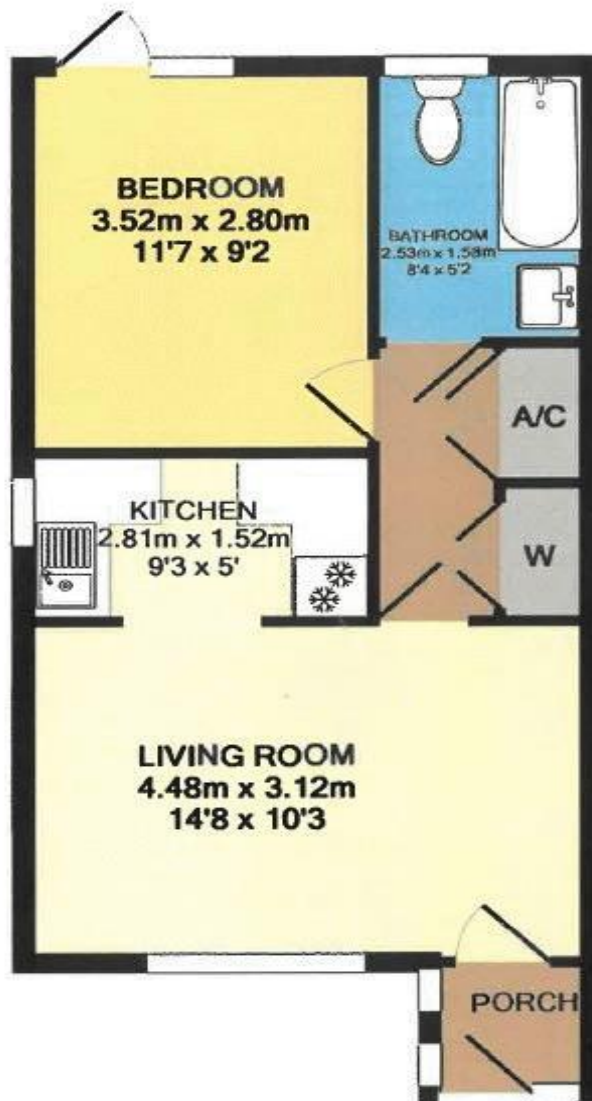
UPVC Double Glazing

New 99 Year Lease

Council Tax Band B £1516

414 Sq Ft (38.5 Sq Mt)





22 SHEPPARDS GARDENS, WESTON, BATH
TOTAL APPROX. FLOOR AREA 38.5 SQ.M. (414 SQ.FT.)

All measurements of walls, doors, windows, fittings and appliances, their size and locations are approximate and cannot be regarded as being an accurate representation neither by the vendor nor their agent. www.inovusproperty.co.uk

Kit Johnson Residential
26-33 High St
Weston
Bath
BA1 4BX
01225 444447
sales@kitjohnson.co.uk
www.kitjohnson.co.uk