

KIT JOHNSON

residential



Southlands, Bath

£450,000

An Extended Four Bedroom Semi. Popular Road. EPC Grade C



128 Southlands

Bath

BA1 4EB

PRICE: £450,000

An extended and thus substantial semi detached house in a popular road above Weston Village and close to Bath's Royal United Hospital. Ideal family accommodation to include hall, living room, dining area opening onto an open plan kitchen with French doors onto the garden. Internal study/office, downstairs cloakroom and a separate utility. Upstairs there are four bedrooms, bathroom and ensuite to shower to the principle bedroom onto the back. Attractive enclosed gardens with views up to Lansdown. Offered with vacant possession. Ideal for access to the M4, local popular primary schools and all the amenities in Weston Village. A truly spacious home.

Four Bedroom Semi

Three Receptions

Utility & Cloakroom

Bathroom & Ensuite

Lawned & Decked Gardens

Gas Central Heating

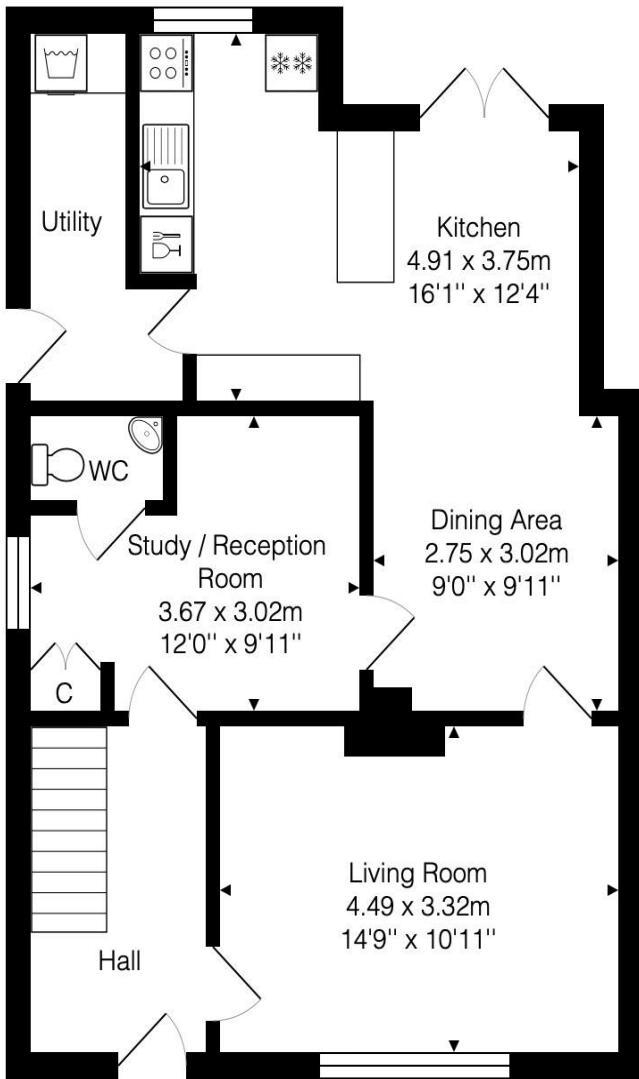
Freehold

Open Views to Rear

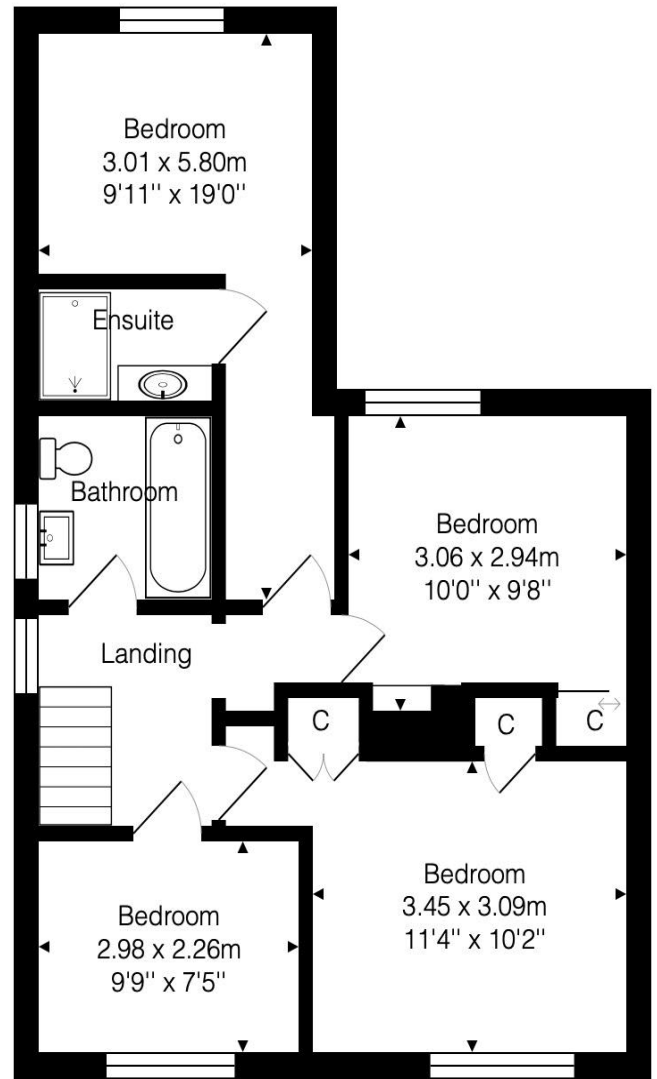
1280 Sq Ft (118.9 Sq Mt)

Council Tax Band C £1824





Ground Floor
Area: 64.1 m² ... 689 ft²



First Floor
Area: 54.9 m² ... 591 ft²

Total Area: 118.9 m² ... 1280 ft²

Whilst every attempt has been made to ensure the accuracy of the floorplan contained here, measurements of doors, windows, rooms and any other items are approximate and no responsibility is taken for any error, omission or mis-statement.

This plan is purely for illustrative purposes only and should be used as such by any prospective purchaser.

Area includes internal and external wall thickness

www.epcassessments.co.uk

Kit Johnson Residential
26-33 High St
Weston
Bath
BA1 4BX
01225 444447
sales@kitjohnson.co.uk
www.kitjohnson.co.uk