

# KIT JOHNSON

residential



Vernslade, Bath

£395,000

**1950's Three Bed Semi. Popular Cul-De-Sac. EPC Grade C.**



17 Vernslade

Bath

BA1 4DN

**PRICE: £395,000**

Circa late 1950's and built by Harry.W.Cross, a semi detached house in a favoured Cul-de-Sac on the edge of Weston and close to Weston All Saints Primary School as well as the amenities in the village and the M4 via Lansdown. Porch, hall, living room, fitted kitchen with integrated appliances. Upstairs there are three bedrooms and a bathroom. Driveway parking to the side and an enclosed rear garden. Offered with vacant possession and priced to sell. A good, solid, privately built home.

**1950's Semi Detached**

**Three Bedrooms**

**Living Room**

**Kitchen**

**Bathroom**

**Parking & Gardens**

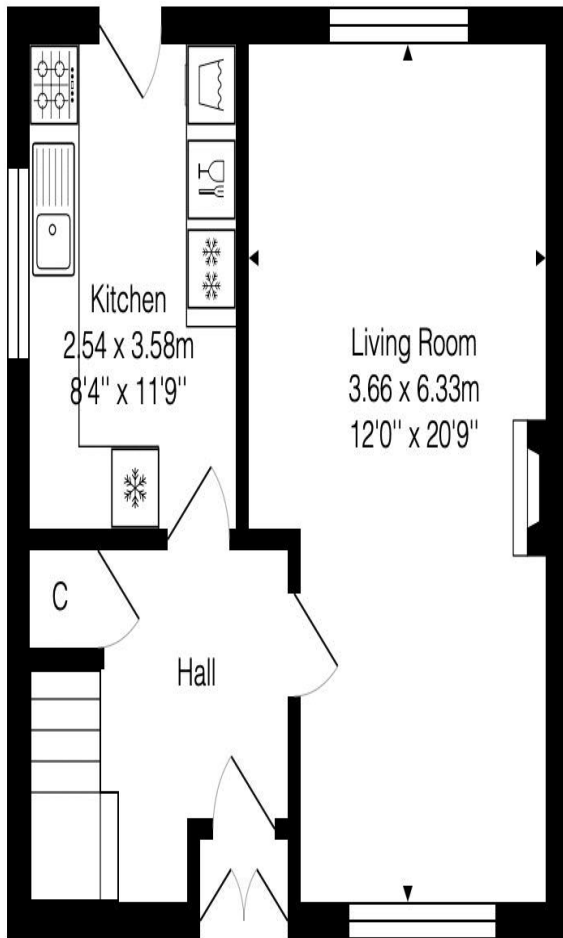
**Gas Central Heating**

**Freehold**

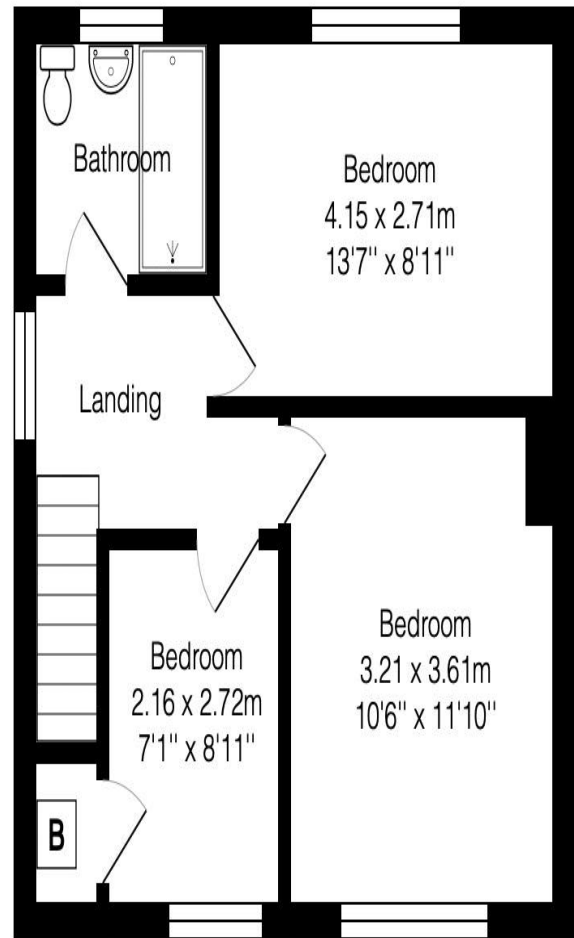
**868 Sq Ft (80.6 Sq Mt)**

**Popular Cul-de-Sac**





Ground Floor  
Area: 40.3 m<sup>2</sup> ... 434 ft<sup>2</sup>



First Floor  
Area: 40.3 m<sup>2</sup> ... 434 ft<sup>2</sup>

Total Area: 80.6 m<sup>2</sup> ... 868 ft<sup>2</sup>

Whilst every attempt has been made to ensure the accuracy of the floorplan contained here, measurements of doors, windows, rooms and any other items are approximate and no responsibility is taken for any error, omission or mis-statement.

This plan is purely for illustrative purposes only and should be used as such by any prospective purchaser.

Area includes internal and external wall thickness

[www.epcassessments.co.uk](http://www.epcassessments.co.uk)

**Kit Johnson Residential**  
**26-33 High St**  
**Weston**  
**Bath**  
**BA1 4BX**  
**01225 444447**  
**sales@kitjohnson.co.uk**  
**www.kitjohnson.co.uk**