

KIT JOHNSON

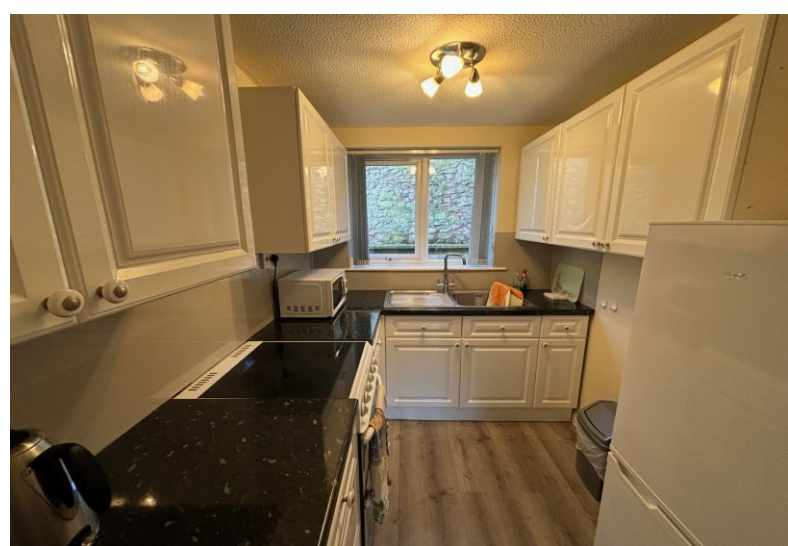
residential



Weston, Bath

£195,000

Two Bedroom, Garden Level Retirement Apartment. EPC Grade D



19 Sheppards Gardens
High Street
Weston
Bath
BA1 4DF

PRICE: £195,000

Rarely Available. A two bedroom garden level apartment in this sought after development off Weston High Street. The apartment is accessed via the communal hall and includes living room, two bedrooms, bathroom and fitted kitchen. The living room and main bedroom overlook the gardens on the West side of the development. This particular apartment has windows in both kitchen and bathroom. There are excellent communal facilities which include a laundry room, gardens and a communal living room. There is an estate manager who looks after the day to day running of Sheppards Gardens. Located in the heart of

Weston Village close to all the local amenities as well as bus routes into Bath City Centre. Being sold with vacant possession. There is strong demand for two bedroom properties for those over 55.

Garden Level

Two Bedrooms

Living Room

Leasehold (Residue of 99 YRS)

Communal Lounge & Laundry Room

Pretty Communal Gardens

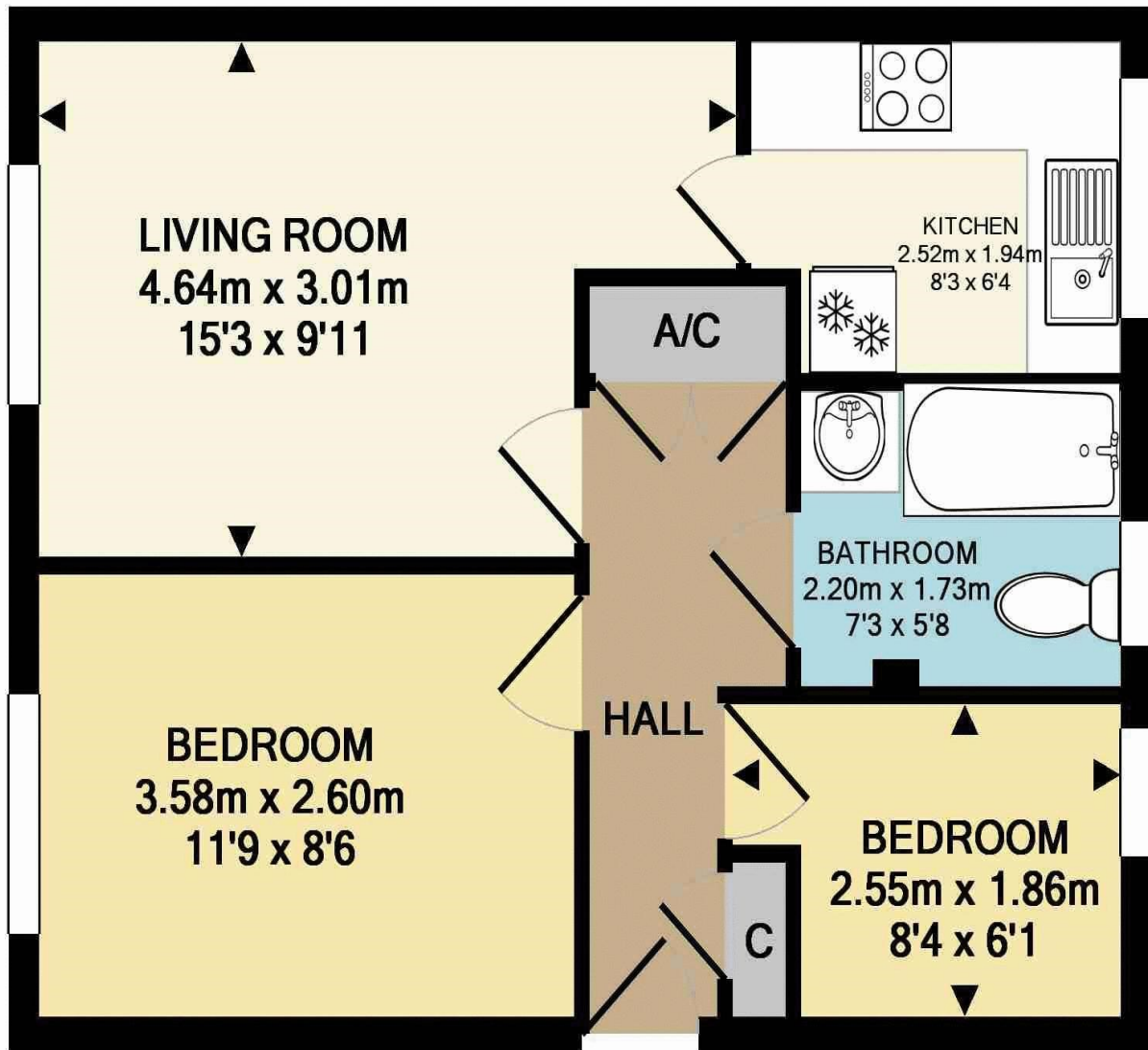
UPVC Double Glazing

Management Fees £264.44pcm

Resident Warden- Janice Cook (01225 336140, janice.cook@anchor.org.uk)

Council Tax Band £1596





19 SHEPPARDS GARDENS, WESTON, BATH
 TOTAL APPROX. FLOOR AREA 40.1 SQ.M. (431 SQ.FT.)

All measurements of walls, doors, windows, fittings and appliances, their size and locations are approximate and cannot be regarded as being an accurate representation neither by the vendor nor their agent. www.inovusproperty.co.uk

Kit Johnson Residential
 26-33 High St
 Weston
 Bath
 BA1 4BX
 01225 444447
sales@kitjohnson.co.uk
www.kitjohnson.co.uk